

الأردنية للتصنيع الآلي
نحن نقود نحن ننجز

®

JO CAM

Jordan Automation

We Lead We Achieve

Hypertherm®

Plasma Cutting Systems, CNC,
& Height Controls

MultiCam

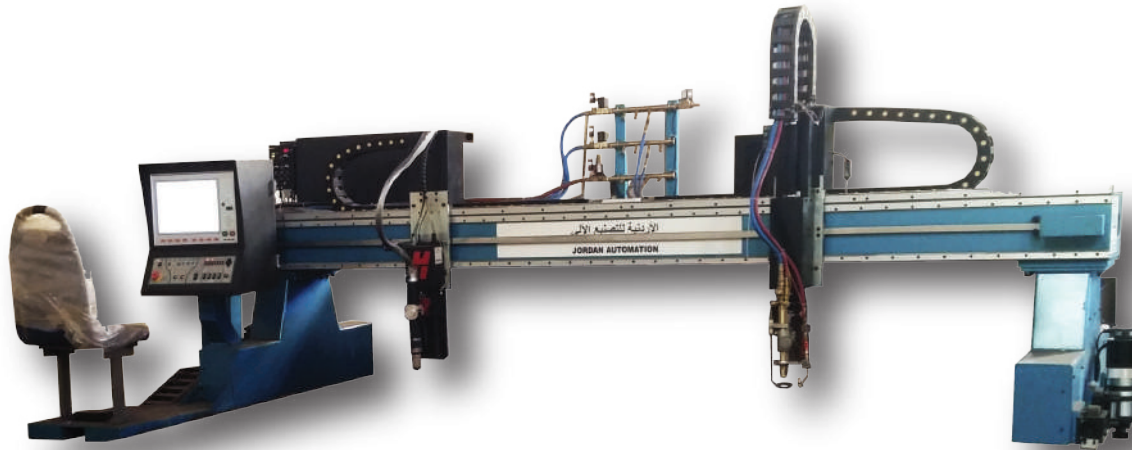
CNC Laser Cutting Systems

I P G
PHOTONICS®

CRYSTAL

Large Format Printer

JO Gantry



ProNest 2017



| | | | |
|--------------------------------|------------------------------------|---------------------------------|--|
| Machine width | 4700mm | Cutting width | 3300 mm (double drive) |
| Machine length | 16000mm | Cutting length | 12000mm |
| Traverse speed | 9000mm/min | Cutting speed | 200-8000mm/min |
| Driver 1 sets | Panasonic Japanese A.C. 0.75 Kw | Driver 2 sets | Panasonic Japanese A.C. 1.5 Kw |
| Gear reducer | 3sets, Shimpo (Japanese) | | |
| First carriage contains | Hypertherm plasma | second carriage contains | oxy-fuel torch with capacitive height control system |
| Software | ProNest 2017 Phoenix | | |



Available power supply for this Machine :



Powermax 125



MAXPRO 200



HPR 130_{XD}



HPR 260_{XD}

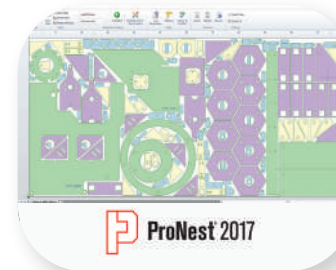
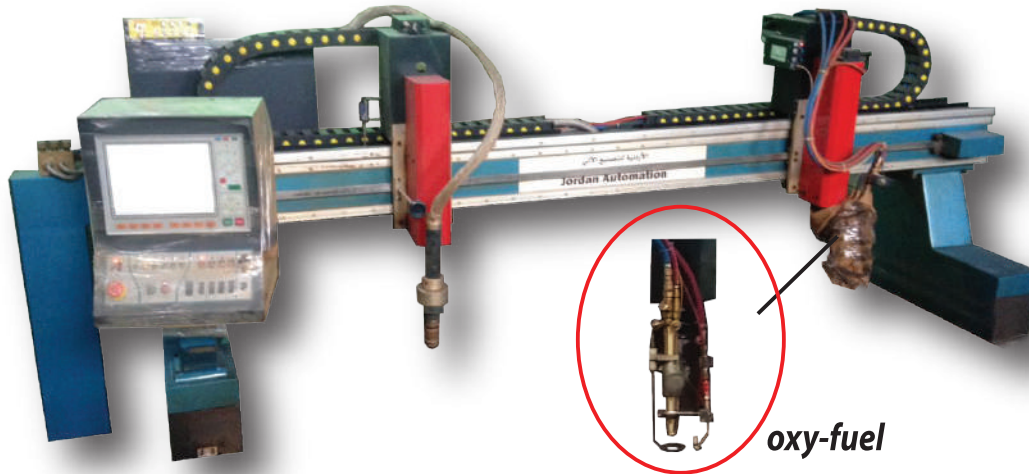


HPR 400_{XD}



XPR 300

JO Light Gantry



| | | | |
|--------------------------------|------------------------------|---------------------------------|--|
| Machine width | 3000mm | Cutting width | 2000 mm (double drive) |
| Machine length | 9000mm | Cutting length | 6000mm |
| Driver 3 sets | Panasonic Japanese A.C. 400w | Gear reducer | 3sets, Shimpo (Japanese) |
| First carriage contains | Hypertherm plasma | second carriage contains | oxy-fuel torch with capacitive height control system |
| Software | ProNest 2017 SheetCam | | |



JO Light Gantry

Hypertherm®

Available power supply for this Machine :



Powermax 125



MAXPRO 200



Powermax 105



Powermax 85



Powermax 65

JO Plasma



| | | | |
|--|----------------------|------------------------------|--------------------------|
| Cutting length | 3000 mm | Cutting width | 1500 mm (double drive) |
| Driver 4 sets | panasonic A.C. 750 w | Gear reducer | 3sets, Shimpo (Japanese) |
| carriage contains | Hypertherm plasma | | |
| Operating Voltage | 380 V 50HZ | Operating Temperature | -5 to 45 C |
| Software | Phoenix SheetCam | Relative Humidity | < 95% |
| Sensor torch height control Hypertherm Sensor PHC | | | |
| Automatic Oil Labricant | | | |

Operation system Microsoft Windows XP 64
Processor Intel Core i3
Memory 8 GB
Hard disk 80 GB
microsoft wireless keyboard And Mouse
Display 18.2 inch LCD Screen

Available power supply for this Machine :



Powermax 105



Powermax 125



HPR 130_{XD}



Powermax 85



Powermax 65



Powermax 45

JO Hybrid



Artcut



UcancamV9



| | | | |
|--|--------------------|------------------------------|--|
| Cutting length | 3000 mm | Cutting width | 1500 mm (double drive) |
| Driver 4 sets | Yaskawa A.C. 850 w | Gear reducer | 3sets, Shimpo (Japanese) |
| carriage contains | Hypertherm plasma | carriage contains | ELTE Spindle 6HP 1800Rpm Hyundai Inverter (7.5HP , 380 V , 3PH) |
| Operating Voltage | 380 V 50HZ | Operating Temperature | -5 to 45 C |
| Software | SheetCam ArtCam | Relative Humidity | < 95% |
| Sensor torch height control Hypertherm Sensor PHC | | | |
| Automatic Oil Labricant | | | |
| Auto (Z) Zero Sensor | | | |

Operation system Microsoft Windows XP 64
Processor Intel Core i3

Memory 8 GB

Hard disk 80 GB

microsoft wireless keyboard And Mouse

Display 18.2 inch LCD Screen

JO Hybrid

Hypertherm®

Available power supply for this Machine :



Powermax 125



Powermax 105



Powermax 85



Powermax 65



Powermax 45

JO Stone



| | | | |
|--------------------------------|--|------------------------------|--------------------------|
| Cutting length | 3000 mm | Cutting width | 1300 mm (double drive) |
| Driver 4 sets | Yaskawa A.C. 850 w | Gear reducer | 3sets, Shimpo (Japanese) |
| carriage contains | ELTE Spindle 10HP 1800Rpm Hyundai Inverter (10 HP, 380 V, 3PH) | | |
| Operating Voltage | 380 V 50HZ | Operating Temperature | -5 to 45 C |
| Software | ArtCam | Relative Humidity | < 95% |
| Automatic Oil Labricant | | | |
| Auto (Z) Zero Sensor | | | |

Operation system Microsoft Windows XP 64
Processor Intel Core i3
Memory 8 GB
Hard disk 80 GB
microsoft wireless keyboard And Mouse
Display 18.2 inch LCD Screen

JO Router



UcancamV9



Artcut



| | | | |
|--------------------------------|---|------------------------------|--------------------------|
| Cutting length | 3000 mm | Cutting width | 1500 mm (double drive) |
| Driver 4 sets | Yaskawa A.C. 850 w | Gear reducer | 3sets, Shimpo (Japanese) |
| carriage contains | ELTE Spindle 6HP 1800Rpm Hyundai Inverter (7.5HP , 380 V , 3PH) | | |
| Operating Voltage | 380 V 50HZ | Operating Temperature | -5 to 45 C |
| Software | ArtCam UcancamV9 Artcut | Relative Humidity | < 95% |
| Automatic Oil Labricant | | | |
| Auto (Z) Zero Sensor | | | |

Operation system Microsoft Windows XP 64
Processor Intel Core i3
Memory 8 GB
Hard disk 80 GB
microsoft wireless keyboard And Mouse
Display 18.2 inch LCD Screen

JO Waterjet



| | |
|-----------------------|----------|
| Machine width | 4000 mm |
| Machine length | 2000 mm |
| Machine Z axis | 150 mm |
| Software | SheetCam |

Hypertherm®



HyPrecision 15



HyPrecision 30



HyPrecision 50



HyPrecision 50S



HyPrecision 60S



HyPrecision 75S



HyPrecision 1000



HyPrecision 1500

JO Waterjet

Hypertherm®

PCIMC-6A special software(Nc studio)

The functions of PCIMC-6A are as follows (run base on windows XP):

- Convert DXF file which is educed from AUTOCAD into NC processing program.
- Function of parameters backup automatically, don't need every time to set parameters.
- Open database can store parameter, just click the material, parameter will be loaded automatically.
- Calculate length of line and time automatically.
- Control cut-out and cut-in automatically.
- Cutting track simulation function.
- The functions of lessening speed on the corner, sand ratio adjustment.
- Support advanced auto function of breakpoint memory and jump perform of program block.
- Support auto open/close control valve sequentially ,open/close valve delay.

Technical parameter

- structure : Bridge type
- efficient cutting area : 4000-2000mm
- X-axis : 4000mm
- Y-axis : 2000mm
- Z-axis : 150mm
- repeatability : 0.05mm
- X,Y speed : 0-15m/min
- cutting accuracy : ± 0.1 mm
- power : 380VAC, 50Hz , 3 phase 4 wire system

Hypertherm Abrasive Pot

- Bulk storage of abrasive for increased efficiency of waterjet operation
- Easy access for refilling
- Multiple pots can be used to quickly switch between abrasive types
- Features
- Low level indicator light
- Pressure regulator with water removal for incoming air
- Single valve operation to pressurize and discharge pot
- Abrasive rated discharge valve
- Cover and screen
- Capacity options:
 - 800 lb (363 kg)
 - 2000 lb (900 kg)
 - 4000 lb (1800 kg)

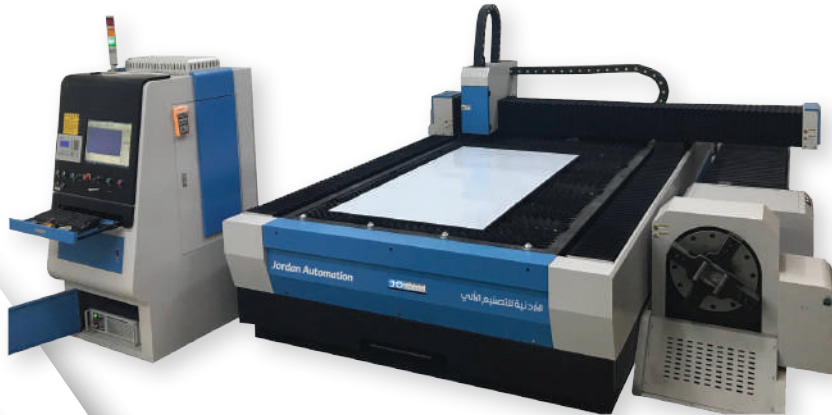


JO FIBER LASER

Cutting machine



JO FIBER LASER Pro



JO FIBER LASER

Cutting machine



DESCRIPTION OF THE MACHINE

The JO FIBER LASER Fiber cutting system, equipped with a RayTools cutting head . All construction sub-units, such as fiber laser resonators, CNC (C Computer Numeric Control) controls, program software, handling equipment, etc are supplied by world class quality manufacturers , assumes total and overall responsibility for the equipment.

The principal characteristics of the JO FIBER LASER cutting equipment are:

- Compact design facilitating a wide variety of applications.
- CNC with laser control function.
- Resonator with reflective sensors. (Trumpf - IPG)
- Simple program for pieces and cutting plans with automatically adapted feed speed and power output for each piece, using CNC. (Option)
- Highly dynamic equipment.
- Rigidity: high strength transfer due to stability of construction.
- Durability: enclosed drivers.
- Accessibility: spare parts service

Features are as follows:

1. Direct control of all the fiber laser functions
2. Synchronized control of the laser source
3. Overall power control
4. High speed perforation
5. Edge machining function
6. Cutting data library
7. High speed fiber laser cutting

Cutting

Laser cutting is one of the largest applications in materials processing and fiber lasers have become the source of choice for a wide range of industries.

IPG Photonics offers reliable fiber laser solutions for each unique application from pulsed lasers used in precision cutting of thin metals to CW lasers used in processing of a variety of materials.

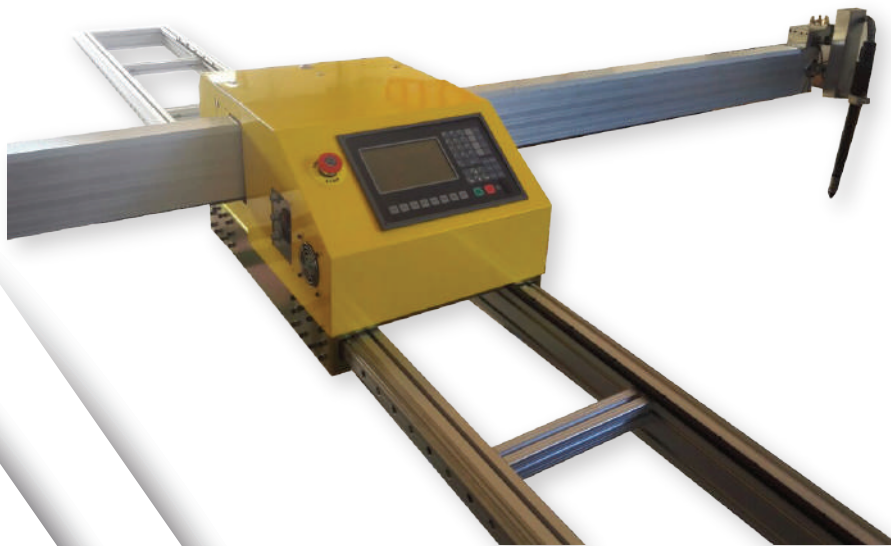
Cutting



JO Portable

Hypertherm®

| | | | |
|----------------------|---|--------------------------|---------------------------------------|
| Cutting Area | 1600/2500*3400mm | Cutting Thickness | Flame: 6~200mm |
| Driver | DC Hybrid Servo Driver | | Plasma: depend on plasma power |
| Cutting Speed | 0~6000mm/mim | Cutting Accuracy | +/- 0.5mm |
| Input Voltage | 230/110V 50/60Hz | | -5 to 45 C |
| Software | FastCAM Software (Professional Version) | | Cutting Mode Flame/Plasma/Both |



LASER ENGRAVING AND CUTTING MACHINE

| Model | BCL1006X | BCL1309X | BCL1610X | BCL1812X |
|----------------------------|---|------------|-------------|-------------|
| Working Area | 1000*600mm | 1300*900mm | 1600*1000mm | 1800*1200mm |
| Laser Power | 80W/100w/120w/150w | | | |
| Laser Type | CO2 Sealed laser Tube | | | |
| Cooling Type | Water Cooling | | | |
| Engraving Speed | 0-60000mm/min | | | |
| Cutting Speed | 0-40000mm/min | | | |
| Laser Output Control | 0-100% set by software | | | |
| Min. Engraving Size | Chinese:2.0mm*2.0mm, English Letter: 1.0mm*1.0mm | | | |
| Highest Scanning Precision | 4000DPI | | | |
| Locating Accuracy | +0.01mm | | | |
| Controlling Software | DSP Control System | | | |
| Graphic Format Supported | DST PLT BMP DXF DWG AI LAS,etc | | | |
| Compatible Software | CORELDRAW PHOTOSHOP AUTOCAD TAJIMA | | | |
| Color Separation | Yes | | | |
| Drive System | High-precision 3-phase Stepper Motor | | | |
| Auxiliary Equipments | Exhaust Fan and Air Exhaust Pipe | | | |
| Power Supply | AC110V/220V+ 10%,50HZ/60HZ | | | |
| Working Environment | Temperature:0-45(,Humidity 5-95%(No Condensate Water) | | | |



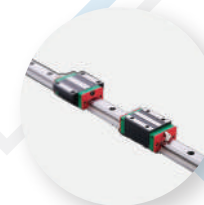
Stepper motor
High - precision
3-phase stepper motor drive



Ultra-light X axis construction design
Bodor's patent design to ensure
high speed moving



Laser tube
Stable laser path , life time
more than 10000 hours



Taiwan Square rail
IT features equal load ratings in
the radial , reverse radial and
lateral directions , and self aligning
to absorb installation error

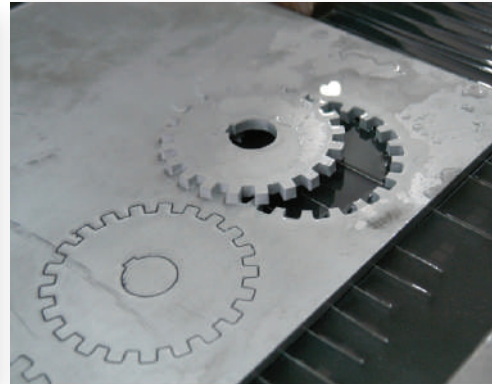
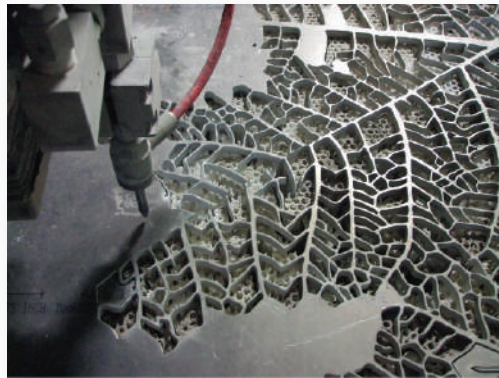
Samples

JO Stone

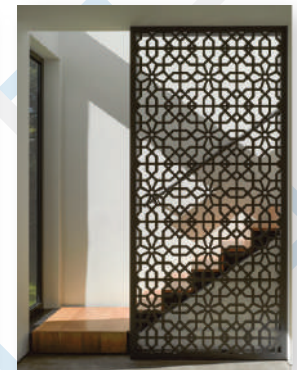
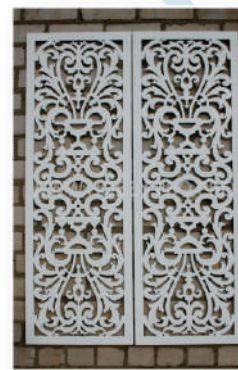


Samples

JO Waterjet



Plasma



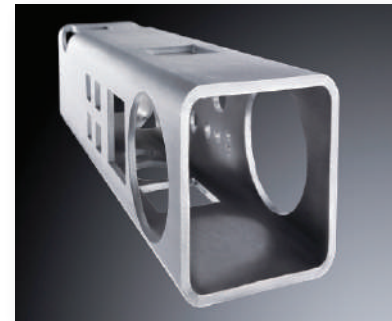
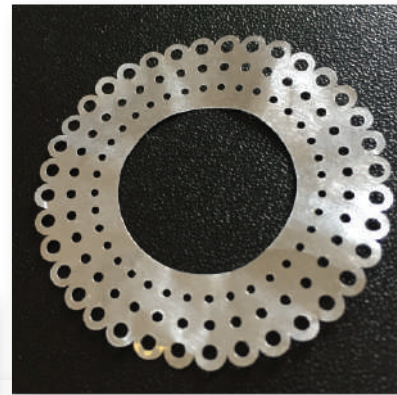
Samples

JO Router



Samples

JO FIBER LASER *Cutting machine*



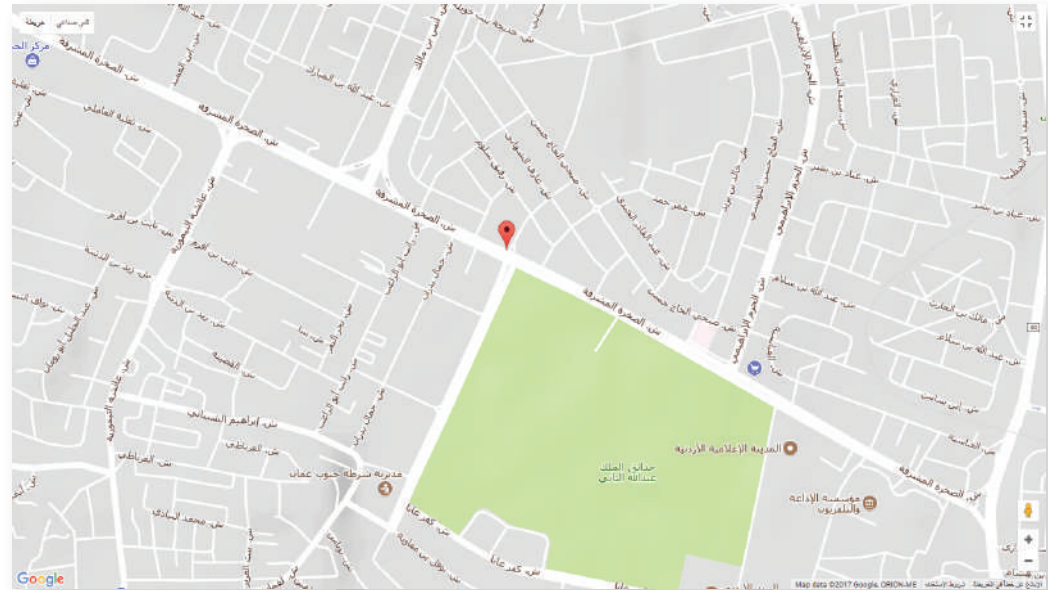
About Us

JORDAN AUTOMATION

is considered as one of the leading companies offering total cutting and sign making solutions to Jordan and Middle East market.

We are an exclusive distributor of the most important companies of the world including manual plasma cutting machines, CNC plasma & Oxy-fuel cutting machines, CNC routers, and water jets.

Also Jordan Automation Manufactures CNC routers and plasma cutting machines using parts from well known vendors in this field.



JORDAN

Amman - Al-Sakhra Almusharafa Street - M. Abu Khamseh Trading Building

Tel: 00962 6 47 44 749

Tel: 00962 6 42 04 840

Fax : 00962 6 47 44 749

P.O.Box: 923218 Amman 11192 Jordan.

Saudi Arabia

Jeddah - King Abdulaziz Street - Queen's Building - Floor# 8 - Office# 803

Telefax : 00966 2 643 24 25

P.O.Box: 34894 Jeddah 21478 Saudi Arabia.

Customer Service



Jordan Automation is looking for a long term relationship with the customer, and to reflect our vision to reality we improve our customer service to be as professional as possible and meet the customer needs as soon as possible with lowest cost and within 48 hours.

Services offered by our customer service team include :

- Technical assistance in and out of warranty
- Supply of genuine consumables and spare parts
- Complete CNC Machines rang commmissioning and training
- CNC and software upgrades

Al Sakhra Al Musharafa Street - M. Abu Khamseh Complex

Telefax : +962 6 4744749/5- P.O.Box 923218 Amman 11192 Jordan

Jeddah -King Abd Al-Aziz Street - Queen Building - Office 803

Telefax : +966 12 643 2425 - P.O.Box 34894 Jeddah 21478 KSA

Email: info@jordan-automation.com - Website: www.jordan-automation.com